



Stay On The Trail

Stay on designated routes, refrain from cutting switchbacks or widening trail boundaries. Be sensitive to wetlands, high mountain tundra and other sensitive areas which are important for both wildlife and people. Please avoid them.



Mind The Signs

Comply with all signs on the trail. Be familiar with Motor Vehicle Use Maps (MVUMs) and other official agency travel management maps. These show the legal routes for your motorcycle.



Share The Trail

We share these trails with all types of user groups. Off Highway Vehicles (OHVs) should yield the "right of way" to non-motorized trail users, and each type may require its own special consideration. Be especially aware of people on horseback.



Stay The Trail Ambassadors are carrying the message of responsible trail use. We ride AND are committed to helping improve OHV trails around Colorado.

We need you to be a part of the community that is actively helping to improve trails and educating others about responsible use.

For more information visit StayTheTrailAmbassadors.org or send an email to Ambassadors@StayTheTrail.org. **Join Us Today!**



GO TO
staythetrail.org



Responsible Recreation Foundation
PO Box 915
Wheat Ridge, CO 80034
responsiblerecreation.org

IN COOPERATION WITH:



Bureau of Land Management
Colorado State Office
2850 Youngfield Street
Lakewood, CO 80215
(303) 239-3600
staythetrail.org/blm



Colorado Off-Highway Vehicle Coalition

Colorado Off-Highway Vehicle Coalition
PO Box 113
Brighton, CO 80601
cohvco.org



Colorado Parks & Wildlife
1313 Sherman Street, Suite 618
Denver, CO 80203
(303) 866-3437
staythetrail.org/parks



Tread Lightly! Inc.
353 E. 400 S., Suite 100
Salt Lake City, UT 84111
(801) 627-0077
treadlightly.org



US Forest Service
Rocky Mountain Region
740 Simms Street
Golden, CO 80401
(303) 275-5350
staythetrail.org/fs



The OHV Registration Program is designed to assist in the funding of projects that provide for the stewardship of OHV opportunities in Colorado.

© 2012 Responsible Recreation Foundation. All rights reserved. "Stay The Trail" & "Keep Your Wheels Where They Belong" are registered trademarks of the Responsible Recreation Foundation. The "Stay The Trail Ambassadors" is a trademark of the Responsible Recreation Foundation.

STT_MC_v1_2012-11



OFF-HIGHWAY GUIDELINES FOR
MOTORCYCLES

Know Where To Go.

- Is the trail open to and a designated route for your vehicle?
- Use official agency maps and observe all signs.
- Motor vehicle use maps are available at staythetrail.org/maps

Do Your Homework.

- What types of challenges can be found on the route: rock, sand, stream crossings, ledges?
- Will you be above tree line? Remember to stay off the tundra!
- Be prepared for sudden Colorado weather changes. Don't forget to pack rain gear, jackets, and gloves.

Are You and Your Vehicle Prepared?

- Wear appropriate safety gear including helmets, eye protection, pants, long sleeve shirts, gloves, and over-the-ankle boots.
- Know your vehicle. Keep it in good condition and read the owners manual. Be prepared with the basics: bring extra water, have proper tools and fill your fuel tank.
- Forest Service approved spark arrestors are required on all OHVs operated on public lands.
- All vehicles (licensed or not) operated on routes designated open to off-highway vehicles are required to obtain and display a Colorado OHV Registration or a Colorado OHV Permit, for questions contact Colorado Parks & Wildlife.
- Colorado Law requires reporting of accidents if property damage reaches \$1500.00 or more, or if there are injuries resulting in hospitalization or death.
- Let someone know where you're going and when you expect to return.

And NEVER Go Out Alone!

Pipe Down! It's The Law

To operate a off-highway motorcycle in Colorado, the following sound limits must be met:

- 96dB(A) if manufactured after 1/1/1998
- 99dB(A) if manufactured before 1/1/1998

GET YOUR BIKE TESTED!: Check with your dealership or visit the Stay The Trail trailer at select riding areas. Visit our website for dates and locations.

REMEMBER: Check you exhaust pipe, if it says "only for use in Closed Course Competition", it is not trail ready and will need modifications including a USFS approved spark arrestor.



Let 'Em Pass!

Pull over to the side of the trail and stop to let faster vehicles pass. Choose a wider spot in the trail to maximize safety and minimize vegetation damage. Faster riders pass with care.



Be Aware

Most traffic on trails is two-way traffic. Be careful when approaching blind corners. Use hand signals to let others know how many riders or vehicles are behind you. A closed fist means that the final rider of the group has passed.



Happy Campers

Save the riding for the trails. Don't ride around unnecessarily in campsites and at trailheads. Always pack out your trash and extinguish your fire properly.



Staging

Pull off the road at the trail head to prepare your vehicle and group. Don't block access to the trail while staging. Be mindful of trailers and stow your ramps.



Get Over It

Ride over obstacles to avoid widening the trail and creating bypasses. The challenge is getting over the tree, not going around it. If the tree is too big, go back and contact the land manager.



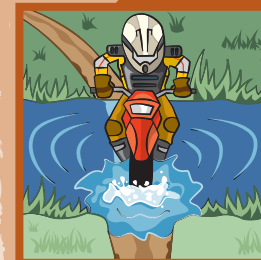
Be Prepared

Make sure you and your bike are prepared for the ride. Obtain a map and have a plan. Pack emergency items and tools for repairs and crashes. Let others know about your travel plans.



No Spin Zone

A good rider only needs enough power to get over an obstacle. Avoid spinning the rear tire during hard acceleration and sliding your wheels during braking. Both gouge the trail and create ruts.



No Wake Area

Stream crossings should be made by crossing them directly at 90 degrees and staying in designated fording points of the trail. Slow down to reduce splashing and churning up the bottom.