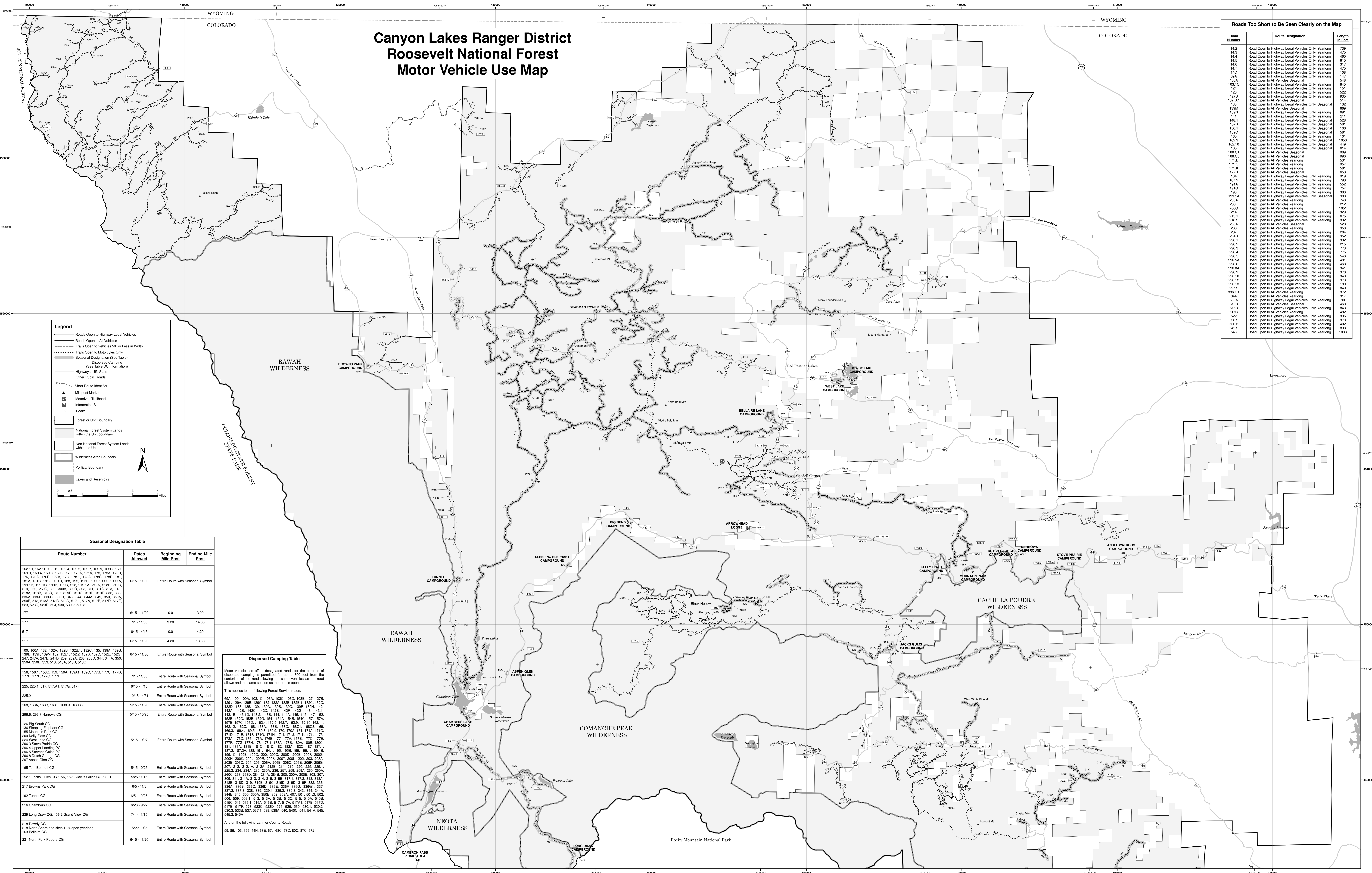


Canyon Lakes Ranger District Roosevelt National Forest Motor Vehicle Use Map



| Roads Too Short to Be Seen Clearly on the Map | | |
|---|--|----------------|
| Road Number | Route Designation | Length in Feet |
| 14.2 | Road Open to Highway Legal Vehicles Only, Yearling | 739 |
| 14.3 | Road Open to Highway Legal Vehicles Only, Yearling | 475 |
| 14.4 | Road Open to Highway Legal Vehicles Only, Yearling | 460 |
| 14.5 | Road Open to Highway Legal Vehicles Only, Yearling | 473 |
| 14.6 | Road Open to Highway Legal Vehicles Only, Yearling | 317 |
| 14.7 | Road Open to Highway Legal Vehicles Only, Yearling | 473 |
| 14C | Road Open to Highway Legal Vehicles Only, Yearling | 106 |
| 14D | Road Open to Highway Legal Vehicles Only, Yearling | 106 |
| 100A | Road Open to All Vehicles Seasonal | 548 |
| 100B | Road Open to All Vehicles Seasonal | 548 |
| 124 | Road Open to Highway Legal Vehicles Only, Yearling | 151 |
| 124 | Road Open to Highway Legal Vehicles Only, Yearling | 151 |
| 127B | Road Open to Highway Legal Vehicles Only, Yearling | 935 |
| 127B | Road Open to Highway Legal Vehicles Only, Yearling | 935 |
| 132.8.1 | Road Open to All Vehicles Seasonal | 514 |
| 138A | Road Open to All Vehicles Seasonal | 669 |
| 138A | Road Open to All Vehicles Seasonal | 669 |
| 141 | Road Open to Highway Legal Vehicles Only, Yearling | 211 |
| 141 | Road Open to Highway Legal Vehicles Only, Yearling | 211 |
| 152B | Road Open to Highway Legal Vehicles Only, Seasonal | 581 |
| 152B | Road Open to Highway Legal Vehicles Only, Seasonal | 581 |
| 159C | Road Open to Highway Legal Vehicles Only, Seasonal | 106 |
| 159C | Road Open to Highway Legal Vehicles Only, Seasonal | 106 |
| 160 | Road Open to Highway Legal Vehicles Only, Yearling | 101 |
| 160.10 | Road Open to Highway Legal Vehicles Only, Yearling | 449 |
| 162.10 | Road Open to Highway Legal Vehicles Only, Seasonal | 449 |
| 162.10 | Road Open to Highway Legal Vehicles Only, Seasonal | 449 |
| 168.1C | Road Open to All Vehicles Seasonal | 989 |
| 168.1C | Road Open to All Vehicles Seasonal | 989 |
| 171.E | Road Open to All Vehicles Yearling | 531 |
| 171.E | Road Open to All Vehicles Yearling | 531 |
| 171.K | Road Open to All Vehicles Yearling | 581 |
| 171.K | Road Open to All Vehicles Yearling | 581 |
| 177D | Road Open to All Vehicles Seasonal | 658 |
| 177D | Road Open to All Vehicles Seasonal | 658 |
| 187.2 | Road Open to Highway Legal Vehicles Only, Yearling | 798 |
| 187.2 | Road Open to Highway Legal Vehicles Only, Yearling | 798 |
| 191.1C | Road Open to Highway Legal Vehicles Only, Yearling | 757 |
| 191.1C | Road Open to Highway Legal Vehicles Only, Yearling | 757 |
| 191.1A | Road Open to Highway Legal Vehicles Only, Seasonal | 900 |
| 191.1A | Road Open to Highway Legal Vehicles Only, Seasonal | 900 |
| 208F | Road Open to All Vehicles Yearling | 212 |
| 208F | Road Open to All Vehicles Yearling | 212 |
| 209G | Road Open to All Vehicles Yearling | 1051 |
| 209G | Road Open to All Vehicles Yearling | 1051 |
| 215.1 | Road Open to Highway Legal Vehicles Only, Yearling | 675 |
| 215.1 | Road Open to Highway Legal Vehicles Only, Yearling | 675 |
| 267 | Road Open to All Vehicles Seasonal | 528 |
| 267 | Road Open to All Vehicles Seasonal | 528 |
| 269 | Road Open to Highway Legal Vehicles Only, Yearling | 264 |
| 269 | Road Open to Highway Legal Vehicles Only, Yearling | 264 |
| 296.1 | Road Open to Highway Legal Vehicles Only, Yearling | 332 |
| 296.1 | Road Open to Highway Legal Vehicles Only, Yearling | 332 |
| 296.2 | Road Open to Highway Legal Vehicles Only, Yearling | 215 |
| 296.2 | Road Open to Highway Legal Vehicles Only, Yearling | 215 |
| 296.4 | Road Open to Highway Legal Vehicles Only, Yearling | 775 |
| 296.4 | Road Open to Highway Legal Vehicles Only, Yearling | 775 |
| 296.5A | Road Open to Highway Legal Vehicles Only, Yearling | 485 |
| 296.5A | Road Open to Highway Legal Vehicles Only, Yearling | 485 |
| 296.8A | Road Open to Highway Legal Vehicles Only, Yearling | 341 |
| 296.8A | Road Open to Highway Legal Vehicles Only, Yearling | 341 |
| 296.10 | Road Open to Highway Legal Vehicles Only, Yearling | 340 |
| 296.10 | Road Open to Highway Legal Vehicles Only, Yearling | 340 |
| 296.12 | Road Open to Highway Legal Vehicles Only, Yearling | 973 |
| 296.12 | Road Open to Highway Legal Vehicles Only, Yearling | 973 |
| 297.2 | Road Open to Highway Legal Vehicles Only, Yearling | 849 |
| 297.2 | Road Open to Highway Legal Vehicles Only, Yearling | 849 |
| 344 | Road Open to All Vehicles Yearling | 917 |
| 344 | Road Open to All Vehicles Yearling | 917 |
| 513B | Road Open to All Vehicles Seasonal | 460 |
| 513B | Road Open to All Vehicles Seasonal | 460 |
| 517D | Road Open to All Vehicles Yearling | 482 |
| 517D | Road Open to All Vehicles Yearling | 482 |
| 522 | Road Open to Highway Legal Vehicles Only, Yearling | 335 |
| 522 | Road Open to Highway Legal Vehicles Only, Yearling | 335 |
| 530.3 | Road Open to Highway Legal Vehicles Only, Yearling | 402 |
| 530.3 | Road Open to Highway Legal Vehicles Only, Yearling | 402 |
| 548 | Road Open to Highway Legal Vehicles Only, Yearling | 1033 |