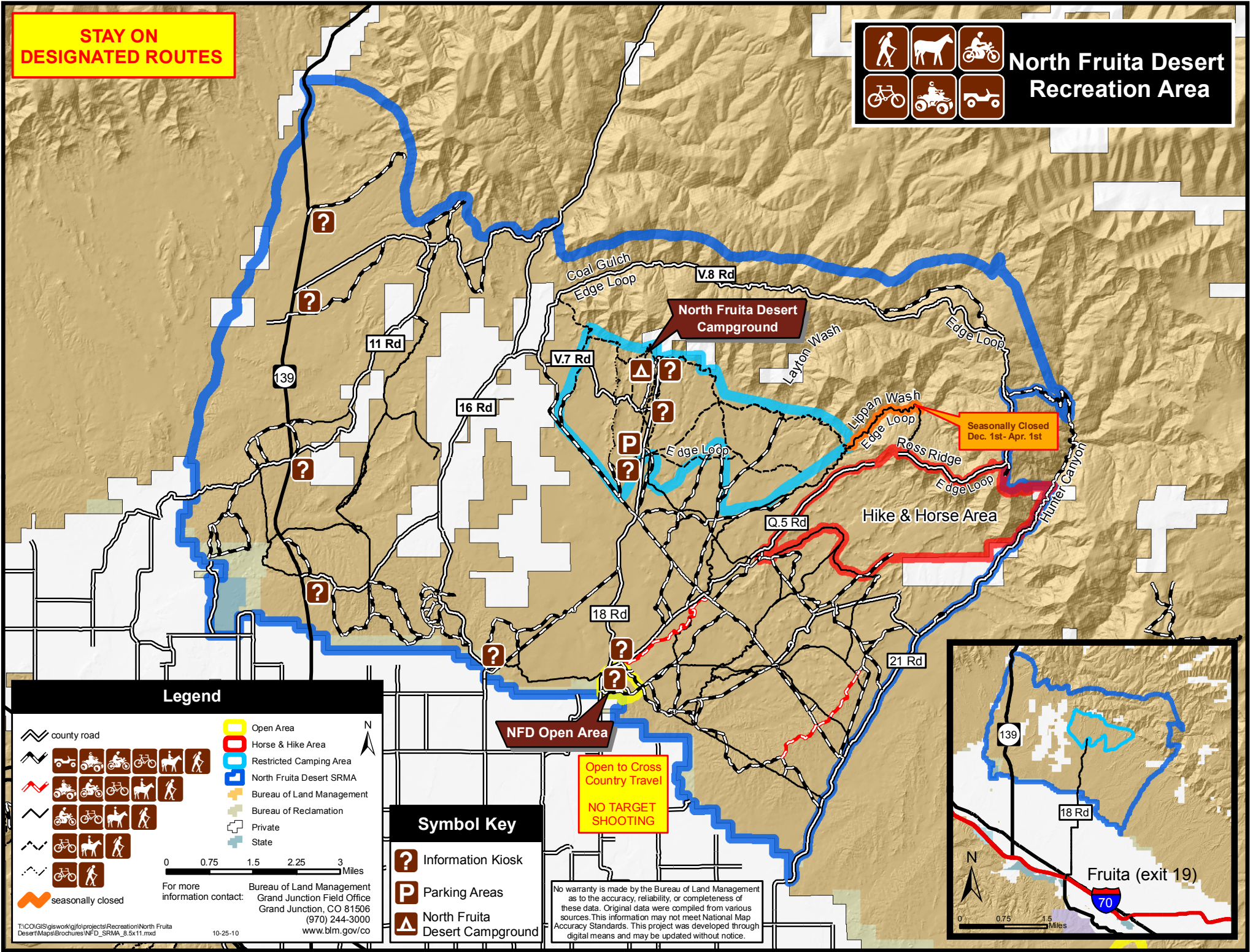


**STAY ON
DESIGNATED ROUTES**

**North Fruita Desert
Recreation Area**



Legend

- county road
- Open Area
- Horse & Hike Area
- Restricted Camping Area
- North Fruita Desert SRMA
- Bureau of Land Management
- Bureau of Reclamation
- Private
- State

0 0.75 1.5 2.25 3 Miles

For more information contact: Bureau of Land Management
Grand Junction Field Office
Grand Junction, CO 81506
(970) 244-3000
www.blm.gov/co

Symbol Key

- Information Kiosk
- Parking Areas
- North Fruita Desert Campground

Open to Cross Country Travel

NO TARGET SHOOTING

No warranty is made by the Bureau of Land Management as to the accuracy, reliability, or completeness of these data. Original data were compiled from various sources. This information may not meet National Map Accuracy Standards. This project was developed through digital means and may be updated without notice.

