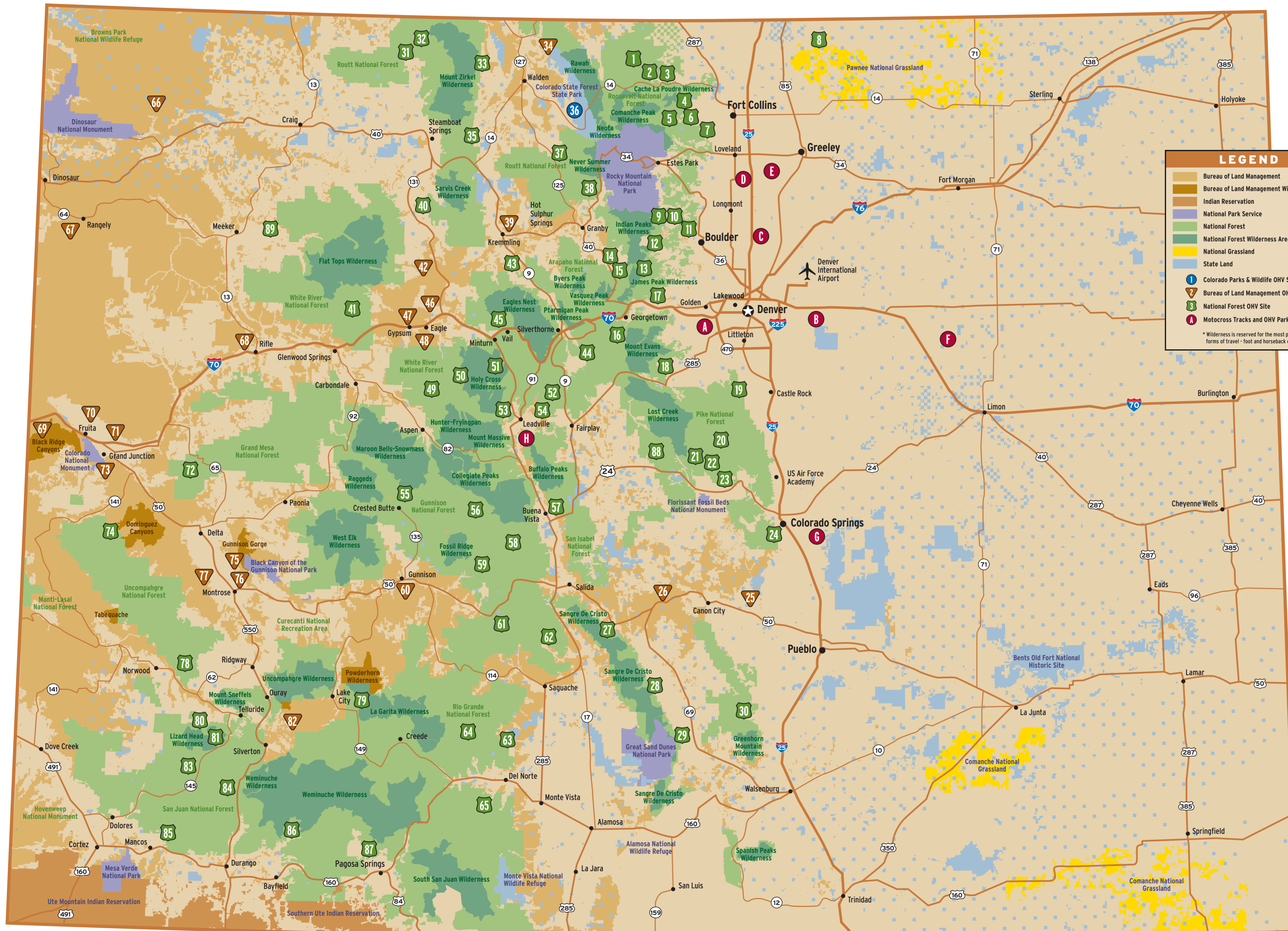


# OHV Opportunities in Colorado

This map was designed to show general locations of OHV recreation sites in Colorado. More detailed information including maps, photos, trail descriptions, and GPS tracks are available at [staythetrail.org/maps](http://staythetrail.org/maps). For specific directions to the sites, please contact the land management agencies listed on the back of this map.



[staythetrail.org](http://staythetrail.org)



## Keep Your Wheels Where They Belong®

Going around obstacles widens trails, impacts vegetation and causes erosion. Challenge yourself by staying on the trail. Use caution when going over obstacles and remember to be courteous to other trail users.



### Get Dirty

Go straight through mud puddles while maintaining a steady speed. Don't get stuck.



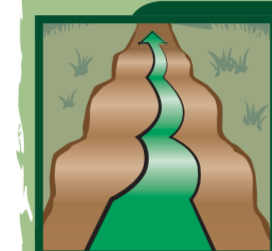
### Rock N Roll

Rocks are natural obstacles and part of the off-road experience. Go over them, not around.



### Get Over It

The challenge is going over the tree. If the tree is too big, go back and contact the land manager.



### Whoop It Up

Go over the whoops (bumps on trails created by constant use). If you want a smooth ride, stay on the highway.



### No Shortcuts



### Stay In Line



### Stay On Course



### Be Sensitive

Wetlands are important and sensitive areas for wildlife and people. Please avoid them.

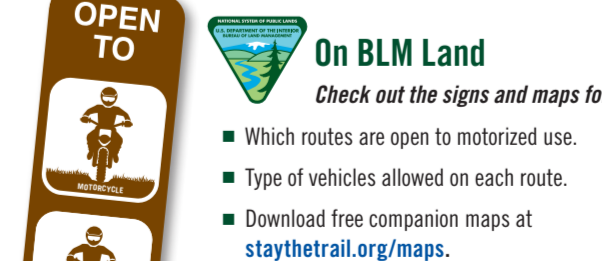
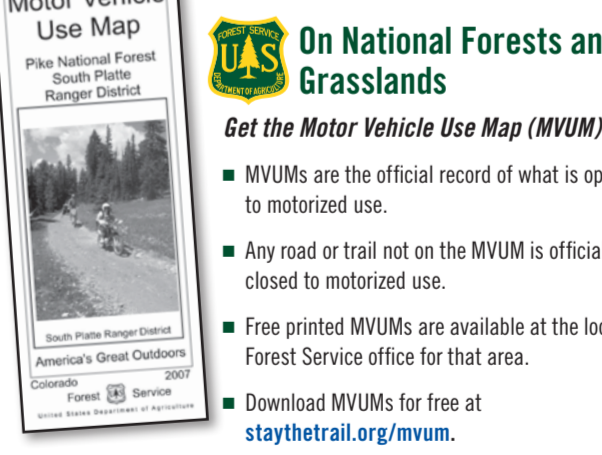
## Mind The Signs



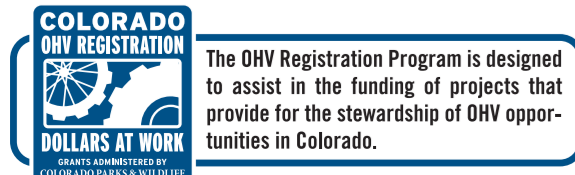
## Mind The Width



## Know Where to Go



For More Information Visit: [staythetrail.org](http://staythetrail.org)



## Important Information - Know Before You Go

Map information collected from a variety of sources. Trail/area conditions vary widely and many trails and areas may have changed significantly since the map was created. Use your discretion and check with the local land management agency before riding or driving on public lands. Ride and drive at your own risk. **YOU ARE RESPONSIBLE!**

Not all routes are open to all vehicles. Follow the Motor Vehicle Use Maps (MVUMs) and signage for the area and ride only on trails open to and wider than your off-highway vehicle (OHV). Almost all trails in Colorado are subject to seasonal restrictions and closures. Call the responsible agency before making plans to ride an area.

All unlicensed vehicles operated on public lands in the State of Colorado must obtain a registration or permit from the OHV Registration Program administered by Colorado State Parks, including those of non-residents. Registration information is available at [staythetrail.org/parks](http://staythetrail.org/parks).

For more information visit [staythetrail.org/faq](http://staythetrail.org/faq)

### 1 Red Feather Lakes

Canyon Lakes Ranger District • (970) 295-6700

Red Feather Lakes • Larimer County

Most suitable for these vehicle types:



This area contains over 100 miles of double-track ATV trails and roads suitable for beginning to advanced riders. The area also contains 7 miles of singlettrack trails open to motorcycles only. Deadman Road is a county road and is strictly off-limits to unlicensed, non-street-legal vehicles.

### 2 Seven Mile

Canyon Lakes Ranger District • (970) 295-6700

Fort Collins • Larimer County

Most suitable for these vehicle types:



The Seven Mile trail starts simply enough but quickly turns into a wet, rocky road with numerous stream crossings and basketball-sized rocks. With slow, careful maneuvering, this trail can be run in stock high-clearance vehicles. If you're on an ATV or motorcycle, be prepared for a bumpy ride. Experience negotiating large rocks is essential.

### 3 Kelly Flats

Canyon Lakes Ranger District • (970) 295-6700

Fort Collins • Larimer County

Most suitable for these vehicle types:



Kelly Flats is notorious for Heart Attack Hill—an extremely steep and rocky climb near the beginning of the trail. Roll-overs and unintentional dismounts are a real risk and the alternate route isn't that much easier. Once past the hill or its alternate, the two-track road flattens out and provides many scenic views.

### 4 Old Flowers Road

Canyon Lakes Ranger District • (970) 295-6700

Masonville • Larimer County

Most suitable for these vehicle types:



Old Flowers Road is a scenic route located close to Fort Collins. Old Flowers Road starts with an easy dirt road that winds through the foothills. A few muddy sections can be challenging when wet. The trail finishes on Pingree Park Road which leads back to Highway 14.

### 5 Donner Hill

Canyon Lakes Ranger District • (970) 295-6700

Fort Collins • Larimer County

Most suitable for these vehicle types:



The Donner Hill area has great singletrack trails that are close to Fort Collins. With trails that connect to the Moody Hill and Crystal Mountain areas, this system has something to offer anyone who is looking for a beautiful outing in the northern foothills.

### 6 Moody Hill / Crystal Mountain

Canyon Lakes Ranger District • (970) 295-6700

Fort Collins • Larimer County

Most suitable for these vehicle types:



The Moody Hill and Crystal Mountain trails are the closest OHV trails to Fort Collins. Good scenery and a few very challenging obstacles combine to make this a good nearby trail for Fort Collins residents. The entrance to Moody can be difficult for stock vehicles, especially in wet conditions.

### 7 Storm Mountain

Canyon Lakes Ranger District • (970) 295-6700

Fort Collins • Larimer County

Most suitable for these vehicle types:



Just outside of Drake, the trails leading up to Storm Mountain provide amazing views of the Roosevelt National Forest. Heading north then west to the trailhead provides a challenging climb to the top of Storm Mountain. Heading north then east offers some easier exploring opportunities.

### 8 Pawnee Main OHV Area

Pawnee National Grassland • (970) 346-5000

Nunn • Weld County

Most suitable for these vehicle types:



The Main Draw OHV Area, a sandy shallow canyon within the Pawnee National Grassland, offers off-season riding close to Fort Collins and Greeley. The open top of the canyon provides easy riding and exploring opportunities. Sand drifts within the canyon provide expert riding opportunities. Open annually from November 1 to April 9

### 9 Middle Saint Vrain

Boulder Ranger District • (303) 541-2500

Nederland • Boulder County

Most suitable for these vehicle types:



The Middle Saint Vrain and Coney Creek trails are challenging 4WD routes located close to the Denver metro area and on the edge of the Indian Peaks Wilderness. Big rocks and deep creek crossings provide lots of challenges for experienced drivers in high-clearance 4WD vehicles. The area is also frequented by riders on ATVs.

### 19 Rampart Range

South Platte Ranger District • (303) 275-5610

Settalia • Douglas County

Most suitable for these vehicle types:



Located 35 miles southwest of Denver, this area features more than 22 designated trails for dirt bikes and ATVs. The trails range in elevation from 6,500 feet to over 8,500 feet with terrain and challenges varied enough for riders of all abilities. Dispersed camping sites and fee campgrounds are available.

### 20 Rainbow Falls

Pikes Peak Ranger District • (719) 636-1602

Woodland Park • Douglas County

Most suitable for these vehicle types:



This area connects to the southern end of the Rampart Range recreation area in southwestern Douglas County. Offering similar riding opportunities for all types of OHVs and plenty of dispersed camping, this location is perfect for that weekend family getaway.

### 21 The Gulches

South Park Ranger District • (719) 836-2031

Woodland Park • Teller County

Most suitable for these vehicle types:



The Gulches are a series of roads that lead deep into the heart of the Hayman Burn area and the South Platte River. Closed after the fire in 2002 for restoration, they have recently opened with some restrictions to allow for some very unique opportunities to see the forest recovery in progress.

### 22 North Divide

Pikes Peak Ranger District • (719) 636-1602

Woodland Park • Teller County

Most suitable for these vehicle types:



This area is a popular ATV and motorcycle riding area just outside of Woodland Park. With many miles of moderately difficult riding, it would take days to explore all of this area. These trails are also close to Rainbow Falls allowing for various riding opportunities nearby.

### 23 Lower Trout Creek

Pikes Peak Ranger District • (719) 636-1602

Woodland Park • Teller County

Most suitable for these vehicle types:



Starting at the Lower Trout Creek trail head, these trails lie within the area affected by the 2002 Hayman Burn, the largest wildfire in Colorado's recorded history. Many trails were closed during restoration but have since reopened and provide great views of the recovering landscape.

### 24 Captain Jacks Trail

Pikes Peak Ranger District • (719) 636-1602

Colorado Springs • El Paso County

Most suitable for these vehicle types:



This popular trail features winding and rolling terrain leading into the Pike National Forest. Please use caution as mountain bikers and other recreationists frequent this trail. Easy access from Colorado Springs makes this a great destination to visit for just an afternoon or for an entire day.

### 25 Penrose Commons

Royal Gorge Field Office • (719) 269-8500

Penrose • Fremont County

Most suitable for these vehicle types:



Extreme rock crawling routes provide a challenge for 4x4 enthusiasts. The area also has multiple trails for all types of motorized users and skill levels.

### 26 Texas Creek

Royal Gorge Field Office • (719) 269-8500

Salida • Fremont County

Most suitable for these vehicle types:



Texas Creek is an extensive trail system that provides great views of the Arkansas River Valley and the Sangre de Cristo Mountains. With many different trails spanning the spectrum in difficulty, all riders can find something to enjoy on these trails.

### 27 Hayden Pass

Salida Ranger District • (719) 539-3591

Coadvale • Fremont County

Most suitable for these vehicle types:



This beautiful trail runs between Highways 50 and 285 south of Salida. With great camping along the way, this moderate trail provides great views of the San Isabel and Rio Grande National Forests. Underground springs keep the trail wet in some sections and it can be dangerous when icy early and late in the season.

### 28 Rainbow Trail

San Carlos Ranger District • (719) 269-8500

Westcliffe • Custer County

Most suitable for these vehicle types:



The Rainbow Trail runs for over 100 miles along the eastern edge of the Sangre de Cristo Mountains from Salida to Westcliffe. Medano Pass Road intersects the Rainbow Trail before terminating in the Great Sand Dunes National Park. Only licensed, street-legal vehicles are allowed west of the Medano Pass summit and into the Great Sand Dunes National Park and Preserve.

### 29 Medano Pass

San Carlos Ranger District • (719) 269-8500

Westcliffe • Huerfano County

Most suitable for these vehicle types:



Medano Pass leads from Highway 69 over to the Sand Dunes National Park. Along the pass are numerous dispersed camping spots, and a number of designated camping spots inside the National Park and Preserve. Only street-legal 4x4 vehicles and licensed dirt bikes are allowed west of the summit.

### 30 St. Charles

San Carlos Ranger District • (719) 269-8500

Colorado City • Custer County

Most suitable for these vehicle types:



These challenging singletrack trails provide a solid amount of fun with steep climbs, switchbacks, and other challenging terrain. Located in southern Colorado, this system is convenient to the Pueblo area. Licensed dirt bikers can top these trails together by taking a short trip down Highway 165.

### 31 Hahns Peak / Nipple Peak

Hahns Peak/Bears Ears Ranger District • (970)-870-2299

Steamboat Springs • Routt County

Most suitable for these vehicle types:



Hahns Peak is the predominant geographical feature in the Steamboat Lake area. The climb to the abandoned fire lookout at the summit is over a wide track covered in loose lava rock. The Nipple Peak and Prospector trails offer wooded singletrack riding with tight turns, narrow tracks, and slippery roads.

### 32 Ellis Trail

Hahns Peak/Bears Ears Ranger District • (970)-870-2299

Steamboat Springs • Routt County

Most suitable for these vehicle types:



The Ellis Trail has been around for some time and is a popular trail in northern Colorado. It offers great scenery and a little bit of challenge for every level of rider. The nearby Ellis Jeep Trail (Red Park Road) is close to 14 miles long and has a number of wet sections so plan for a full day.

### 33 Grizzly Helena Trail System

Parks Ranger District • (970) 723-8204

Walden • Jackson County

Most suitable for these vehicle types:



This advanced singletrack trail requires expert bike handling skills to negotiate Burn area and the South Platte River. Closed after the fire in 2002 for restoration, they have recently opened with some restrictions to allow for some very unique opportunities to see the forest recovery in progress.

### 34 North Sand Hills Recreation Area

Kremmling Field Office • (970) 724-3000

Cowdrey • Jackson County

Most suitable for these vehicle types:



Free and open year round, the North Sand Hills is the only sand OHV area in the state and provides diverse opportunities for off-highway enthusiasts. The area has primitive camping and restrooms but no sources of potable water. Roads east of the dunes allow access to trails on state and Forest Service land.

### 35 Percy Lake

Parks Ranger District • (970) 723-8204

Steamboat Springs • Jackson County

Most suitable for these vehicle types:



The Percy Lake Trail is a rough, rocky, challenging ATV trail through the woods that connects to the midler and much smoother Wyoming Trail. The Wyoming Trail tops out at Buffalo Pass on the southern edge of the Mount Zirkel Wilderness Area. Be prepared to yield to mountain bikers on the Wyoming Trail.

### 36 State Forest State Park

Colorado State Forest State Park • (970) 723-8366

Walden • Jackson County

Most suitable for these vehicle types:



The State Forest State Park is located in the mouse viewing capital of Colorado and offers abundant camping with ride-in / ride-out access to the OHV trails within the park. Non-motorized members of your group may enjoy nearby mountain biking and hiking trails or visiting the park's Moose Visitor Center while you're out riding.

### 37 Willow Creek / Snyder Creek

Parks Ranger District • (970) 723-8204

Rand, Walden, Gould • Jackson County

Most suitable for these vehicle types:



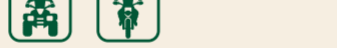
This trail system near Rand consists mostly of loops of intermediate level singletrack. The trails to the northeast are predominantly easy with a few short intermediate sections. The southwestern trails are mostly intermediate with a few moderately difficult sections.

### 38 Stillwater Pass

Sulphur Ranger District • (970) 887-4100

Grand Lake • Grand County

Most suitable for these vehicle types:



This beautiful and scenic pass, located just outside of Grand Lake, is a wonderful mountain drive. Most of the road is graded, however, water and mud can occur during and after hard rains. A great area with camping access for anyone looking to get off the paved path and see what Colorado really offers.

### 39 Wolford Mountain

Kremmling Field Office • (970) 724-3000

Kremmling • Grand County

Most suitable for these vehicle types:



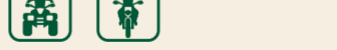
The Wolford Trail Management Area provides over 150 miles of trails immediately north of Kremmling. With 4WD, ATV, and singletrack trails available, this area is a popular destination in northern Colorado. The area is multiple use so please be mindful of hikers and equestrians.

### 40 Yampa Area Trail Systems

Yampa Ranger District • (970) 638-4516

Yampa • Routt County

Most suitable for these vehicle types:



This popular trail system on both sides of the town of Yampa offers great access to many of the lakes in the area. Moderate ATV trails, such as Heart Lake also provide more technical riding for those looking for a greater challenge.

### 41 Flat Tops/Heart Lake/Deep Lake Trails

Eagle Ranger District • (970) 328-6388

Goreau • Garfield County

Most suitable for these vehicle types:



The Flat Tops area is a system of designated primitive forest roads that are accessible to all types of OHVs including side-by-sides. Nearby is the Flat Tops Wilderness Area providing primitive non-motorized and non-mechanized recreation opportunities.

### 42 McCoy

Colorado River Valley Field Office • (970) 876-9000

Wolfcott • Eagle County

Most suitable for these vehicle types:



This singletrack trail provides riders with beautiful vistas while negotiating the technical, rocky, and tight trail through the high-county juniper forest. Highly recommended for experienced riders only.

### 43 Spring Creek Road OHV Area

Dillon Ranger District • (970) 468-5400

Silverthorne • Grand County

Most suitable for these vehicle types:



The Spring Creek Road OHV Area is part of more than 100 miles of off-highway vehicle routes in the Summit and Grand County area. Offering a variety of opportunities in both difficulty and length, the trails that wind through the forests of the Colorado high country are easy to enjoy.

### 44 Summit County Vicinity

Dillon Ranger District • (970) 468-5400

Woodland Park • Douglas County

Most suitable for these vehicle types:



This area in Summit County offers a variety of trails from winding mountain passes great for all vehicle types to steep and narrow switchbacks that can challenge even experienced drivers. Located in the heart of the Colorado high country, many great towns are in the area to visit after a day on the trails.

### 45 Red and White Mountain

Holy Cross Ranger District • (970) 827-5715

Vail • Eagle County

Most suitable for these vehicle types:



Offering great access to Vail, Avon and Edwards this trail system has many popular 4WD forest roads and ATV routes. With great views of the mountains, the singletack trail becomes an ATV trail a few miles north of Lone Pine and then continues north before terminating at the Helena trailhead.

### 46 Bocca Mountain

Colorado River Valley Field Office • (970) 876-9000

Wolfcott • Eagle County

Most suitable for these vehicle types:

